

45-150

REGISTERED PROFESSIONAL LAND SURVEYOR
Joseph P. Full
OREGON JUN 21 1997
JOSEPH P. FULLING
2805
RENEW BY: 12/31/05

ABIQUA HEIGHTS PHASE 3

IN S.E. 1/4 SEC. 35, T. 6 S., R. 1 W., W.M.
CITY OF SILVERTON, MARION COUNTY, OREGON

NOTES:

- A 10' PUBLIC UTILITY EASEMENT EXISTS ON LOT LINES ADJACENT TO PUBLIC STREETS AS SHOWN.
- AN EASEMENT FOR A WATER PIPELINE RECORDED IN VOL. 478, PAGE 85 MAY AFFECT THIS PROPERTY. EXACT LOCATION NOT DEFINED.
- A PORTION OF A 20 FEET WIDE CITY WATER LINE EASEMENT OVERLAPS INTO THE PUBLIC UTILITY EASEMENT ON LOTS 99, 100 AND 132 THROUGH 136.

() = RECORD & MEASURED BEARING & DISTANCE PER C.S. 3631B OR AS NOTED.

- B.O.T.P. = BOOK OF TOWN PLATS
- P.U.E. = PUBLIC UTILITY EASEMENT
- C.S. = COUNTY SURVEY
- I.P. = IRON PIPE
- I.R. = IRON ROD
- M.C.M. = MARION COUNTY MONUMENT
- MON. = MONUMENT
- P. = PAGE
- R. = REEL
- V. = VOLUME

- Ⓐ TRACT A IS A CITY WALKWAY AND PUBLIC UTILITY EASEMENT.
- Ⓑ 25' WIDE CITY SANITARY SEWER AND STORM DRAIN EASEMENT.

MONUMENT NOTES

- FD 5/8" IR YPC MULTI/TECH ENG. FLUSH. B.O.T.P. VOL. 44, PAGE 9. HELD.
- FD 5/8" IR YPC MULTI/TECH ENG. FLUSH. C.S. 3631B. HELD FOR CONTROL.
- FD 5/8" IR YPC BARKER FLUSH. C.S. 3361B. HELD FOR CONTROL.

BY:
MULTI/TECH ENGINEERING SERVICES, INC.
1185 13TH ST. S.E.
SALEM, OREGON 97302
503-363-9227

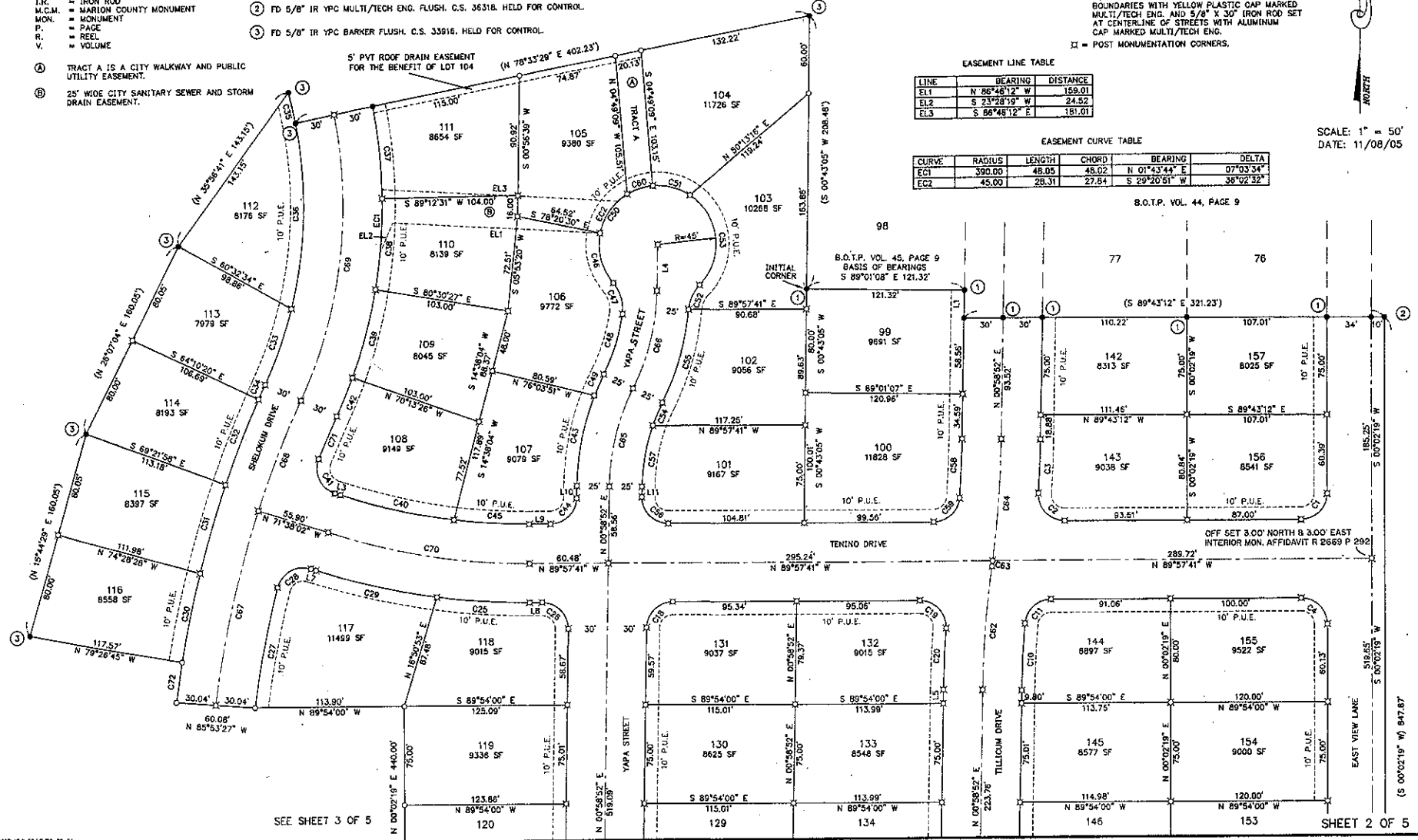
- = MONUMENT FOUND AS NOTED
- ⊙ = 5/8" X 30" IRON ROD SET AT LOT CORNERS WITH YELLOW PLASTIC CAP MARKED MULTI/TECH ENG., AND 5/8" X 30" IRON ROD SET AT BOUNDARY CORNERS, POINTS OF CURVES AND TANGENTS ON STREET BOUNDARIES WITH YELLOW PLASTIC CAP MARKED MULTI/TECH ENG. AND 5/8" X 30" IRON ROD SET AT CENTERLINE OF STREETS WITH ALUMINUM CAP MARKED MULTI/TECH ENG.
- ⊖ = POST MONUMENTATION CORNERS.

EASEMENT LINE TABLE

LINE	BEARING	DISTANCE
EL1	N 86°48'12" E	159.01
EL2	S 23°28'59" W	24.52
EL3	S 86°48'12" E	181.01

EASEMENT CURVE TABLE

CURVE	RADIUS	LENGTH	CHORD	BEARING	DELTA
EC1	390.00	48.05	48.02	N 01°43'44" E	07°03'34"
EC2	45.00	28.31	27.84	S 29°20'51" W	38°02'32"



SCALE: 1" = 50'
DATE: 11/08/05

45-150

ABIQUA HEIGHTS PHASE 3

IN S.E. 1/4 SEC. 35, T. 6 S., R. 1 W., W.M.
CITY OF SILVERTON, MARION COUNTY, OREGON

REGISTERED
PROFESSIONAL
LAND SURVEYOR

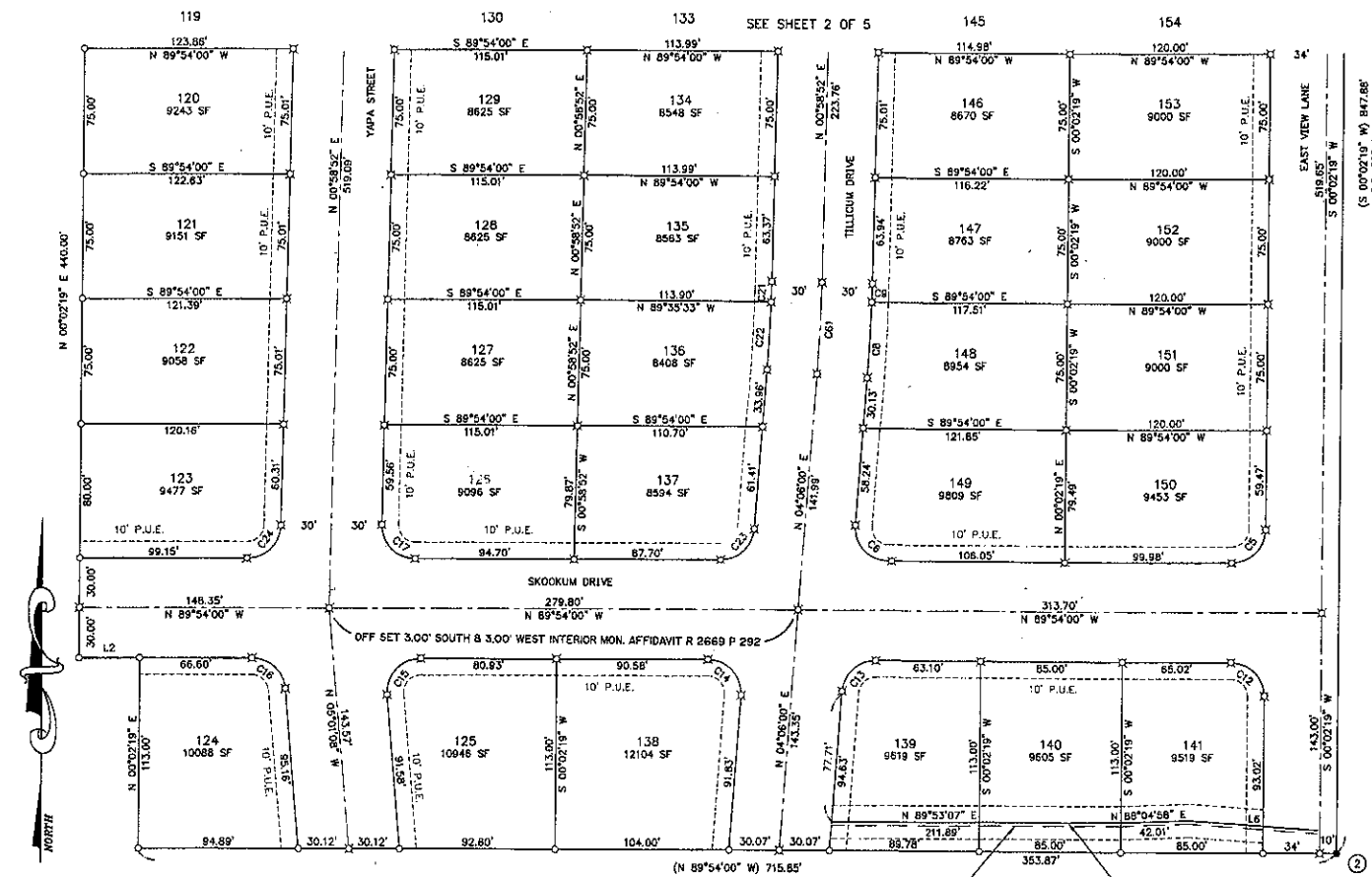
Joseph P. Kelly
OREGON
JAN 21, 1987
JOSEPH P. FIELDING
2805
RENEW BY: 12/31/05

- NOTES:
1. A 10' PUBLIC UTILITY EASEMENT EXISTS ON LOT LINES ADJACENT TO PUBLIC STREETS AS SHOWN.
 2. AN EASEMENT FOR A WATER PIPELINE RECORDED IN VOL. 478, PAGE 85 MAY AFFECT THIS PROPERTY. EXACT LOCATION NOT DEFINED.
 3. A PORTION OF A 20 FEET WIDE CITY WATER LINE EASEMENT OVERLAPS INTO THE PUBLIC UTILITY EASEMENT ON LOTS 99, 100 AND 132 THROUGH 136.

BY:
MULTI/TECH ENGINEERING SERVICES, INC.
1155 13TH ST. S.E.
SALEM, OREGON 97302
503-383-9227

- MONUMENT NOTES
- ① FD 5/8" IR YPC MULTI/TECH ENG. FLUSH. B.O.T.P. VOL. 44, PAGE 9. HELD.
 - ② FD 5/8" IR YPC MULTI/TECH ENG. FLUSH. C.S. 36318. HELD FOR CONTROL.
 - ③ FD 5/8" IR YPC BARKER FLUSH. C.S. 33916. HELD FOR CONTROL.

- = MONUMENT FOUND AS NOTED
 - ⊙ = 5/8" X 30" IRON ROD SET AT LOT CORNERS WITH YELLOW PLASTIC CAP MARKED MULTI/TECH ENG. AND 5/8" X 30" IRON ROD SET AT BOUNDARY CORNERS, POINTS OF CURVES AND TANGENTS ON STREET BOUNDARIES WITH YELLOW PLASTIC CAP MARKED MULTI/TECH ENG. AND 5/8" X 30" IRON ROD SET AT CENTERLINE OF STREETS WITH ALUMINUM CAP MARKED MULTI/TECH ENG.
 - ⊠ = POST MONUMENTATION CORNERS.
 - () = RECORD & MEASURED BEARING & DISTANCE PER C.S. 36318 OR AS NOTED.
- B.O.T.P. = BOOK OF TOWN PLATS
P.U.E. = PUBLIC UTILITY EASEMENT
C.S. = COUNTY SURVEY
I.P. = IRON PIPE
I.R. = IRON ROD
M.C.M. = MARION COUNTY MONUMENT
MON. = MONUMENT
P. = PAGE
R. = REEL
V. = VOLUME
- Ⓐ CITY WALKWAY AND PUBLIC UTILITY EASEMENTS.



SCALE: 1" = 50'
DATE: 11/08/05

NOTE: FACILITIES NO LONGER EXIST WITHIN THESE EASEMENTS. THE PROCESS OF RELINQUISHMENT IS UNDER WAY AT THE DATE OF THIS PLAT.