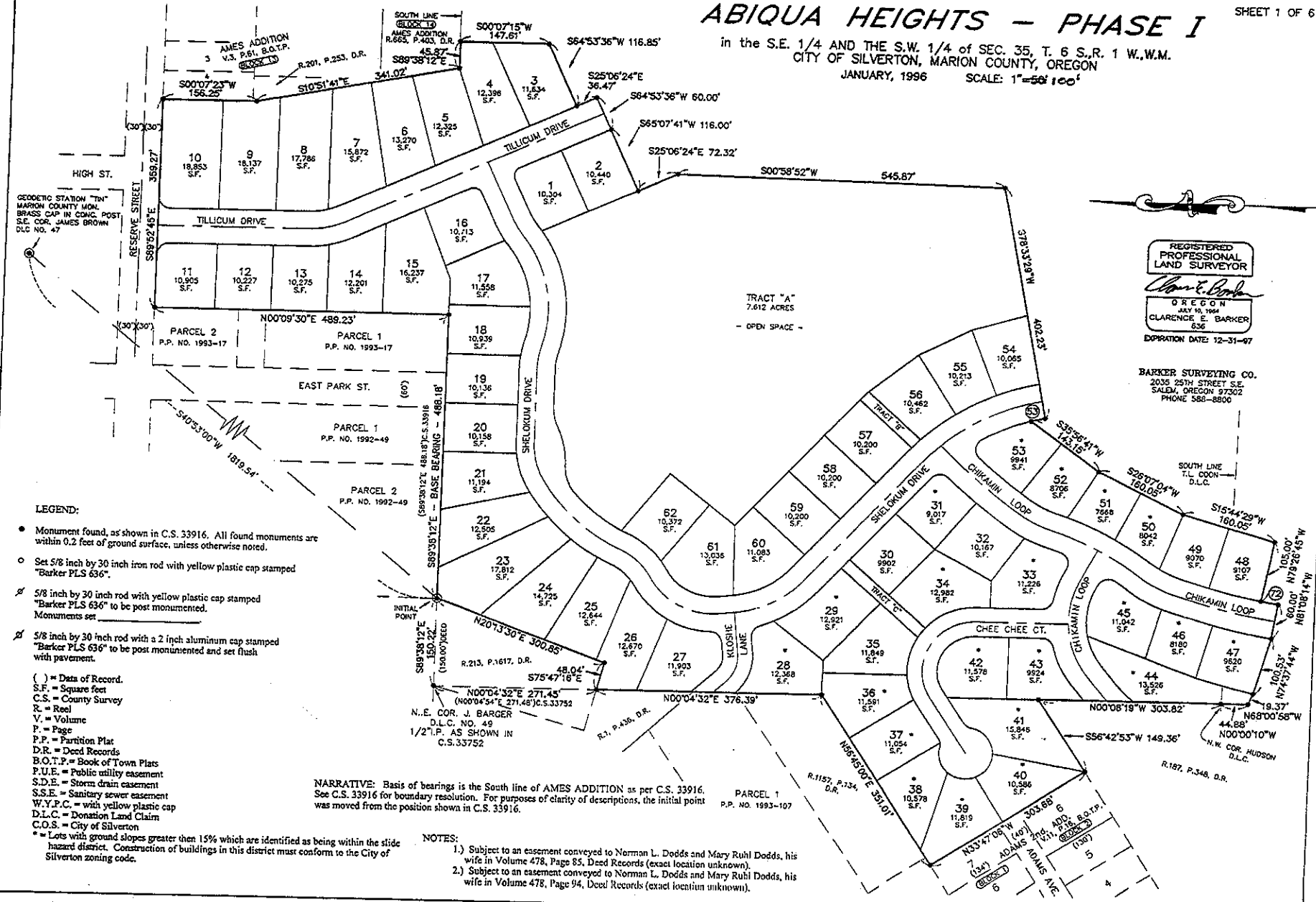


ABIQUA HEIGHTS - PHASE I

in the S.E. 1/4 AND THE S.W. 1/4 of SEC. 35, T. 6 S., R. 1 W., W.M.
CITY OF SILVERTON, MARION COUNTY, OREGON
JANUARY, 1996 SCALE: 1"=50' 100'



GEODETIC STATION "IN" MARION COUNTY MON. BRASS CAP IN CONC. POST S.E. COR. JAMES BROWN D.L.C. NO. 47

REGISTERED PROFESSIONAL LAND SURVEYOR
Clarence Barker
OREGON
JULY 10, 1964
CLARENCE E. BARKER
636
EXPIRATION DATE: 12-31-97

BARKER SURVEYING CO.
2035 25TH STREET S.E.
SALEM, OREGON 97302
PHONE 586-8800

LEGEND:

- Monument found, as shown in C.S. 33916. All found monuments are within 0.2 feet of ground surface, unless otherwise noted.
- Set 5/8 inch by 30 inch iron rod with yellow plastic cap stamped "Barker PLS 636".
- ⊗ 5/8 inch by 30 inch rod with yellow plastic cap stamped "Barker PLS 636" to be post monumented. Monuments set
- ⊗ 5/8 inch by 30 inch rod with a 2 inch aluminum cap stamped "Barker PLS 636" to be post monumented and set flush with pavement.
- () = Data of Record.
- S.F. = Square feet
- C.S. = County Survey
- R. = Reel
- V. = Volume
- P. = Page
- P.P. = Partition Plat
- D.R. = Deed Records
- B.O.T.P. = Book of Town Plats
- P.U.E. = Public utility easement
- S.D.E. = Storm drain easement
- S.S.E. = Sanitary sewer easement
- W.Y.P.C. = with yellow plastic cap
- D.L.C. = Donation Land Claim
- C.D.S. = City of Silverton

NARRATIVE: Basis of bearings is the South line of AMES ADDITION as per C.S. 33916. See C.S. 33916 for boundary resolution. For purposes of clarity of descriptions, the initial point was moved from the position shown in C.S. 33916.

NOTES:

- 1.) Subject to an easement conveyed to Norman L. Dodds and Mary Ruhl Dodds, his wife in Volume 478, Page 85, Deed Records (exact location unknown).
- 2.) Subject to an easement conveyed to Norman L. Dodds and Mary Ruhl Dodds, his wife in Volume 478, Page 94, Deed Records (exact location unknown).

41-71

ABIQUA HEIGHTS - PHASE I

in the S.E. 1/4 AND THE S.W. 1/4 of SEC. 35, T. 6 S., R. 1 W., W.M.
CITY OF SILVERTON, MARION COUNTY, OREGON
JANUARY, 1996 SCALE: 1"=50'

CHANGES OF MONUMENTATION PER INTERIOR MONUMENTATION AFFIDAVIT:

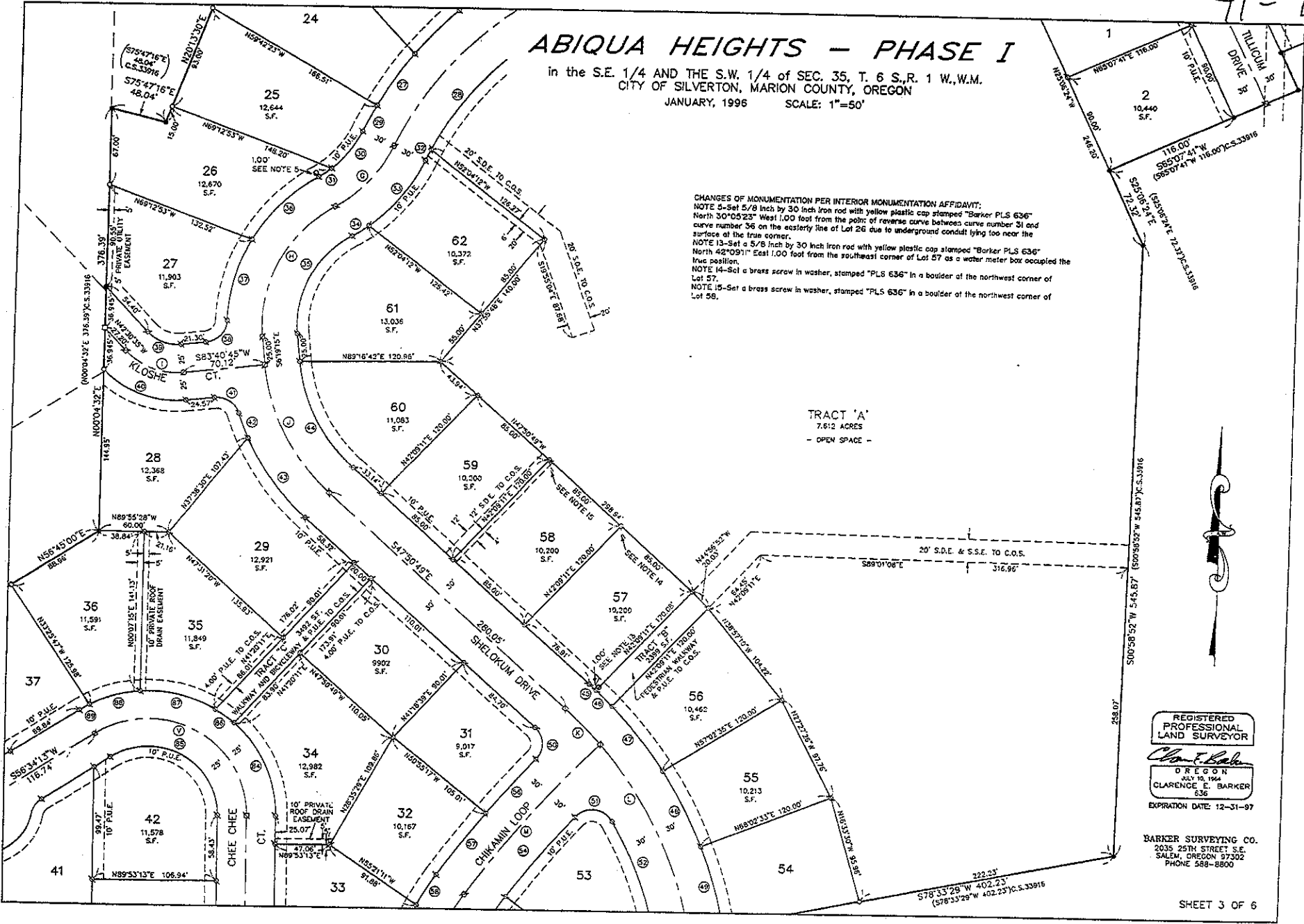
NOTE 5-Set 5/8 inch by 30 inch iron rod with yellow plastic cap stamped "Barker PLS 636" North 30°05'23" West 1.00 foot from the point of reverse curve between curve number 31 and curve number 36 on the easterly line of Lot 26 due to underground conduit lying too near the surface at the true corner.

NOTE 13-Set a 5/8 inch by 30 inch iron rod with yellow plastic cap stamped "Barker PLS 636" North 42°09'11" East 1.00 foot from the southeast corner of Lot 57 as a water meter box occupied the true position.

NOTE 14-Set a brass screw in washer, stamped "PLS 636" in a boulder at the northwest corner of Lot 57.

NOTE 15-Set a brass screw in washer, stamped "PLS 636" in a boulder at the northwest corner of Lot 58.

TRACT 'A'
7.612 ACRES
- OPEN SPACE -



REGISTERED
PROFESSIONAL
LAND SURVEYOR

Clarence E. Barker

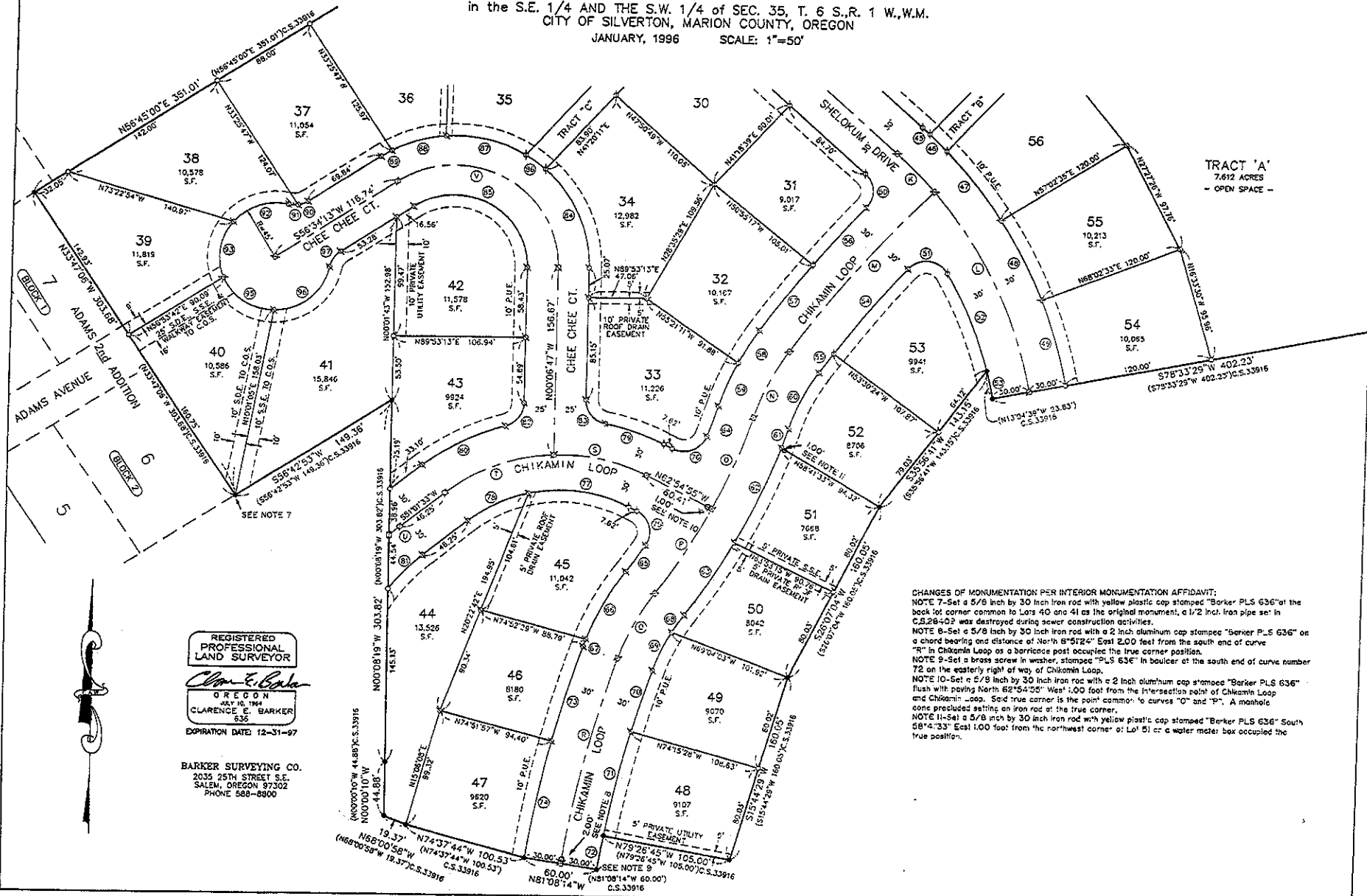
OREGON
JULY 19, 1964
CLARENCE E. BARKER
636

EXPIRATION DATE: 12-31-97

BARKER SURVEYING CO.
2035 25TH STREET S.E.
SALEM, OREGON 97302
PHONE 568-8800

ABIQUA HEIGHTS - PHASE I

in the S.E. 1/4 AND THE S.W. 1/4 of SEC. 35, T. 6 S., R. 1 W., W.M.
CITY OF SILVERTON, MARION COUNTY, OREGON
JANUARY, 1996 SCALE: 1"=50'



TRACT 'A'
7.612 ACRES
- OPEN SPACE -

REGISTERED
PROFESSIONAL
LAND SURVEYOR

Clarence E. Barker

OREGON
411 10, 194
CLARENCE E. BARKER
636

EXPIRATION DATE 12-31-97

BARKER SURVEYING CO.
2035 25TH STREET S.E.
SALMON, OREGON 97302
PHONE 588-8800

CHANGES OF MONUMENTATION PER INTERIOR MONUMENTATION AFFIDAVIT:
NOTE 7-Set a 5/8 inch by 30 inch iron rod with yellow plastic cap stamped "Barker PLS 636" at the back lot corner common to Lots 40 and 41 as the original monument; a 1/2 inch iron pipe set in C.S.28-023 was destroyed during sewer construction activities.
NOTE 8-Set a 5/8 inch by 30 inch iron rod with a 2 inch aluminum cap stamped "Barker PLS 636" on a chord bearing and distance of North 8°51'24" East 2.00 feet from the south end of curve "R" in Chikamin Loop as a barricade post occupied the true corner position.
NOTE 9-Set a brass screw in washer, stamped "PLS 636" in baluster at the south end of curve number 72 on the easterly right of way of Chikamin Loop.
NOTE 10-Set a 5/8 inch by 30 inch iron rod with a 2 inch aluminum cap stamped "Barker PLS 636" flush with paving North 62°54'25" West 1.00 foot from the intersection point of Chikamin Loop and Chikamin Loop. Said true corner is the point common to curves "O" and "P". A monument cone precluded setting an iron rod at the true corner.
NOTE 11-Set a 5/8 inch by 30 inch iron rod with yellow plastic cap stamped "Barker PLS 636" South 68°14'33" East 1.00 foot from the northwest corner of Lot 51 or a water meter box occupied the true position.

41-71

ABIQUA HEIGHTS - PHASE I

in the S.E. 1/4 AND THE S.W. 1/4 of SEC. 35, T. 6 S.R. 1 W.W.M.
CITY OF SILVERTON, MARION COUNTY, OREGON
JANUARY, 1996 SCALE: 1"=50'

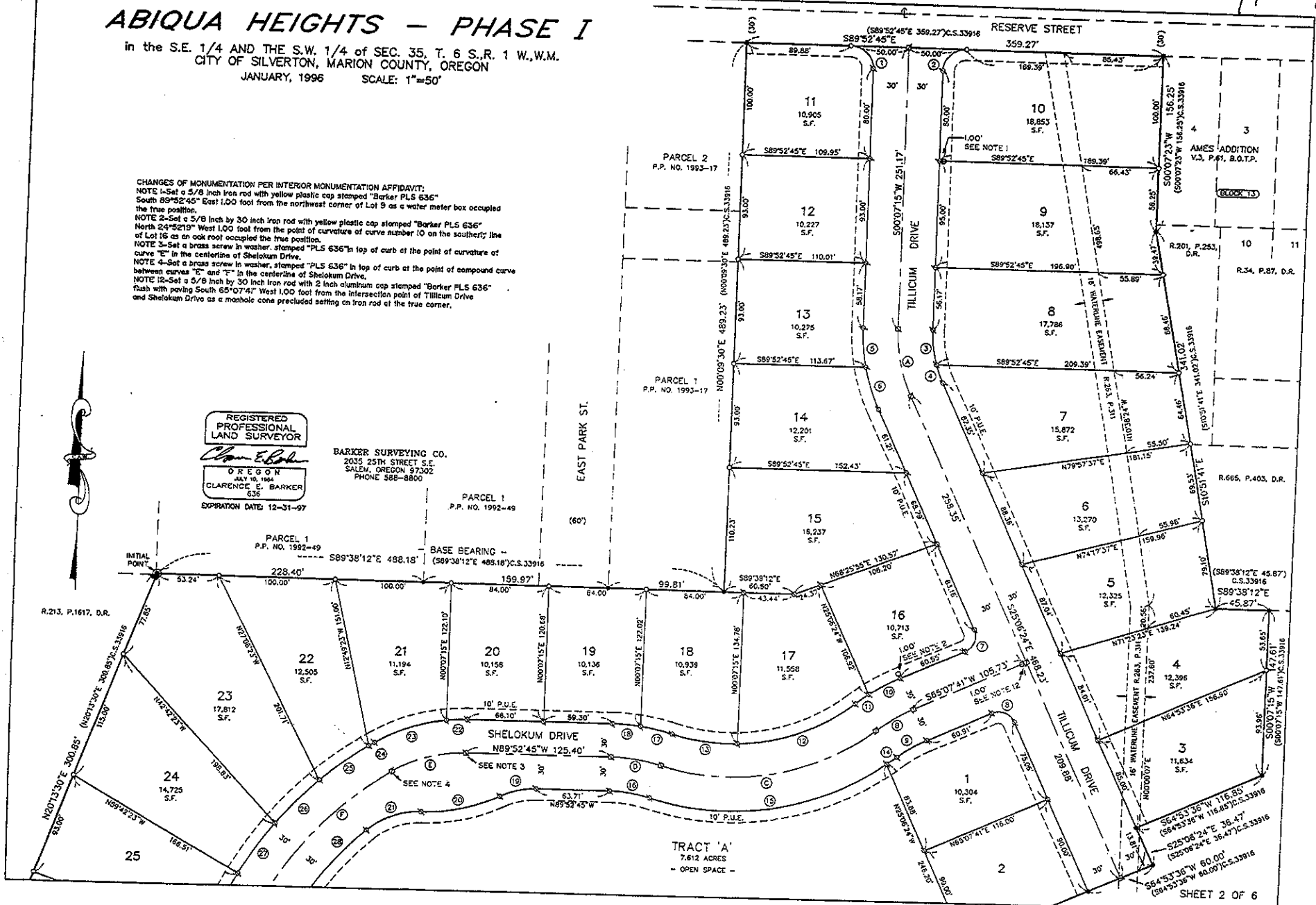
CHANGES OF MONUMENTATION PER INTERIOR MONUMENTATION AFFIDAVIT:
 NOTE 1-Set a 5/8 inch iron rod with yellow plastic cap stamped "Barker PLS 636"
 South 89°52'45" East 1.00 foot from the northwest corner of Lot 9 as a water meter box occupied the true position.
 NOTE 2-Set a 5/8 inch by 30 inch iron rod with yellow plastic cap stamped "Barker PLS 636"
 North 24°52'19" West 1.00 foot from the point of curvature of curve number 10 on the southerly line of Lot 16 as an oak root occupied the true position.
 NOTE 3-Set a brass screw in washer, stamped "PLS 636" in top of curb at the point of curvature of curve "C" in the centerline of Shelokum Drive.
 NOTE 4-Set a brass screw in washer, stamped "PLS 636" in top of curb at the point of compound curve between curves "E" and "F" in the centerline of Shelokum Drive.
 NOTE 12-Set a 5/8 inch by 30 inch iron rod with 2 inch aluminum cap stamped "Barker PLS 636" flush with paving South 65°07'41" West 1.00 foot from the intersection point of Tillikum Drive and Shelokum Drive as a manhole cone precluded setting on iron rod at the true corner.



REGISTERED
PROFESSIONAL
LAND SURVEYOR
Clare E. Barker
OREGON
JULY 10, 1964
CLARENCE C. BARKER
636
EXPIRATION DATE: 12-31-97

BARKER SURVEYING CO.
2035 25TH STREET S.E.
SALEM, OREGON 97302
PHONE 588-8800

EAST PARK ST.



TRACT 'A'
7.612 ACRES
- OPEN SPACE -